



STAINLESS HAND EDGERS

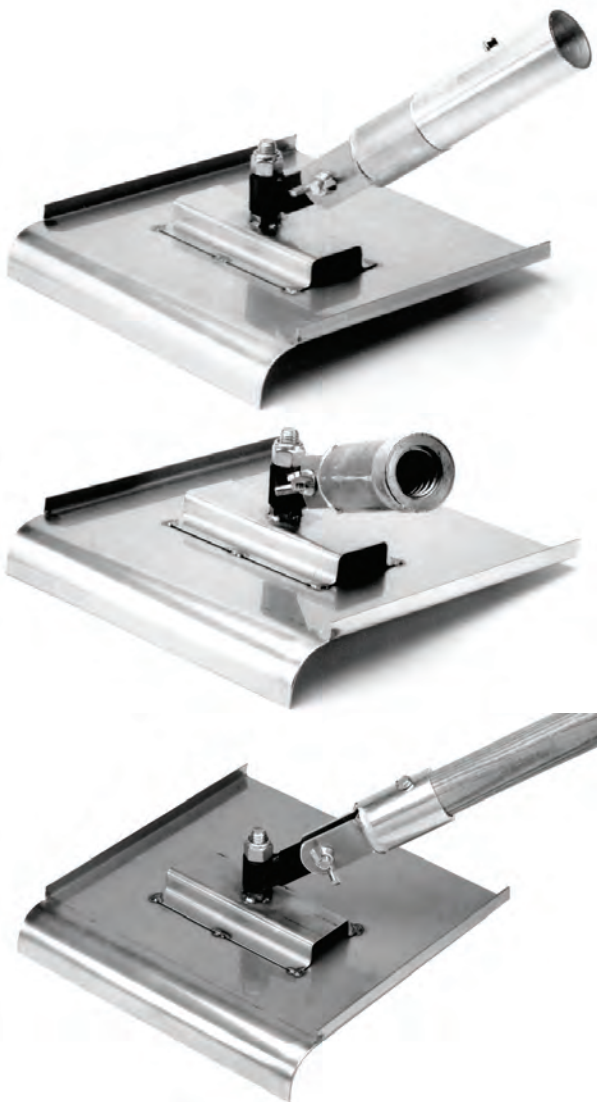
Made from heavy duty stainless steel, our HEAVY DUTY hand held edgers are available in five popular radii. Turned up blade edges prevent gouging and allow easy two-way edging. All edgers are 10" x 10" and feature our comfortable float handle.

**ALL WELDED
RIVET FREE
STAINLESS STEEL**

RADIUS	PART NO.
1/4"	CWT-27 SHE 10 025
3/8"	CWT-27 SHE 10 038
1/2"	CWT-27 SHE 10 050
3/4"	CWT-27 SHE 10 075
1"	CWT-27 SHE 10 100

USES STANDARD REPLACEABLE FLOAT HANDLE

[click to order](#)



STAINLESS WALKING EDGERS

Made from heavy duty stainless steel, our walking edgers are available in five popular radii. Base is 10" x 10" with turned up plate edges to prevent gouging. Features a multiple-angled swivel head to allow any handle positioning. Snap-Lock version fits both 1-3/8" and 1-3/4" handles (NOT INCLUDED). Threaded version fits standard threaded handles (NOT INCLUDED). Wooden Handle version INCLUDES our 60" Ash handle.

HANDLE TYPE	RADIUS	PART NO.
Hardwood	1/4"	CWT-27 SWEWH 025
Hardwood	3/8"	CWT-27 SWEWH 038
Hardwood	1/2"	CWT-27 SWEWH 050
Hardwood	3/4"	CWT-27 SWEWH 075
Hardwood	1"	CWT-27 SWEWH 100
Snap-Lock	1/4"	CWT-27 SWESL 025
Snap-Lock	3/8"	CWT-27 SWESL 038
Snap-Lock	1/2"	CWT-27 SWESL 050
Snap-Lock	3/4"	CWT-27 SWESL 075
Snap-Lock	1"	CWT-27 SWESL 100
Threaded	1/4"	CWT-27 SWETH 025
Threaded	3/8"	CWT-27 SWETH 038
Threaded	1/2"	CWT-27 SWETH 050
Threaded	3/4"	CWT-27 SWETH 075
Threaded	1"	CWT-27 SWETH 100

[click to order](#)

ALL WELDED RIVET FREE STAINLESS STEEL